

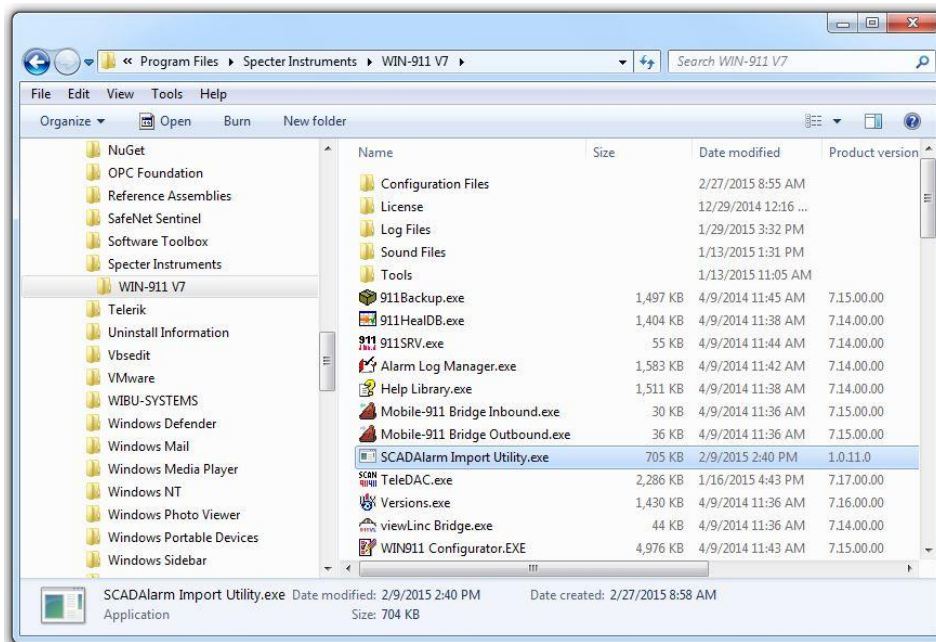
SCADAAlarm Conversion Utility, Version 1.0.11

WIN-911 Software is now providing a way for SCADAAlarm users to migrate their configurations to WIN-911 V7. As much of the SCADAAlarm project as possible will be translated into the WIN-911 V7 configuration *.MDB. There are differences in functionality, behavior and scheduling that cannot be converted or are not supported in WIN-911. However, most users will find the greatest portion of their project intact after the tool is used.

Downloading the executable from:

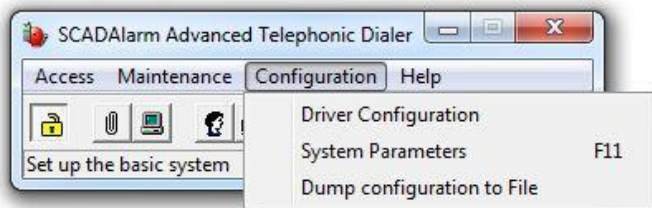
<http://WIN911.com/wp-content/Downloadcenter/SCADAAlarmImportUtility.zip>

Place the “SCADAAlarm Import Utility.exe” into the current WIN-911 install folder which by default is “C:\Program Files (x86)\Specter Instruments\WIN-911 V7”.

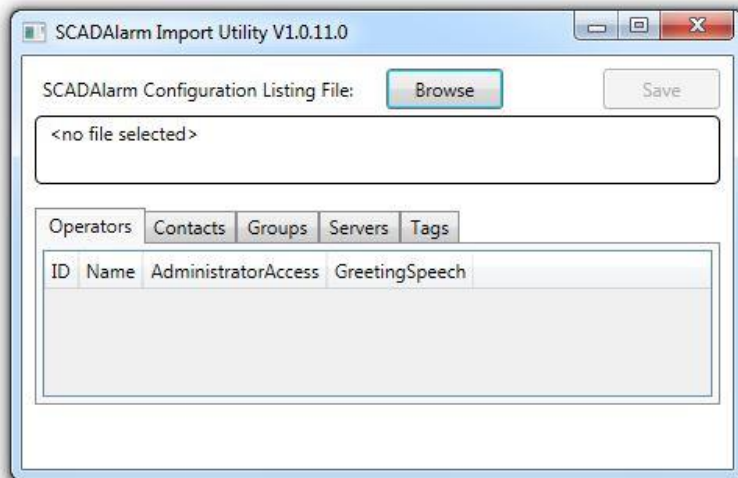


NOTE: Be sure to “Run as Administrator” in versions of Windows that have the feature.

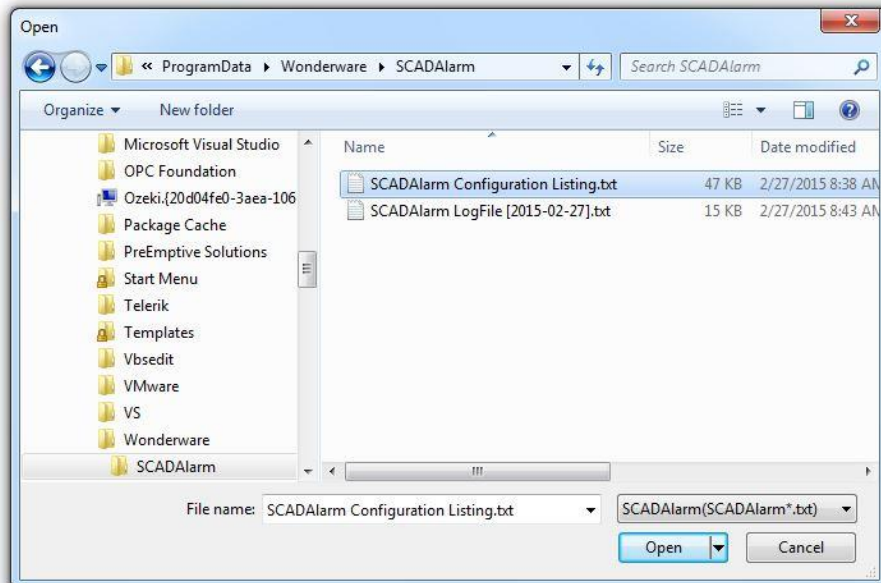
Next, go into your SCADAAlarm software and click on the “Configuration” menu item and select “Dump configuration to File”.



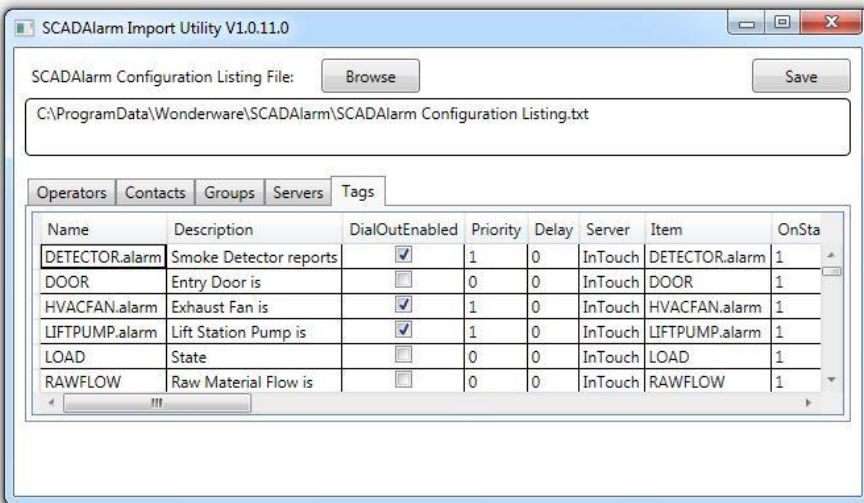
Launch the “SCADAAlarm Import Utility.exe” and click on the “Browse” button.



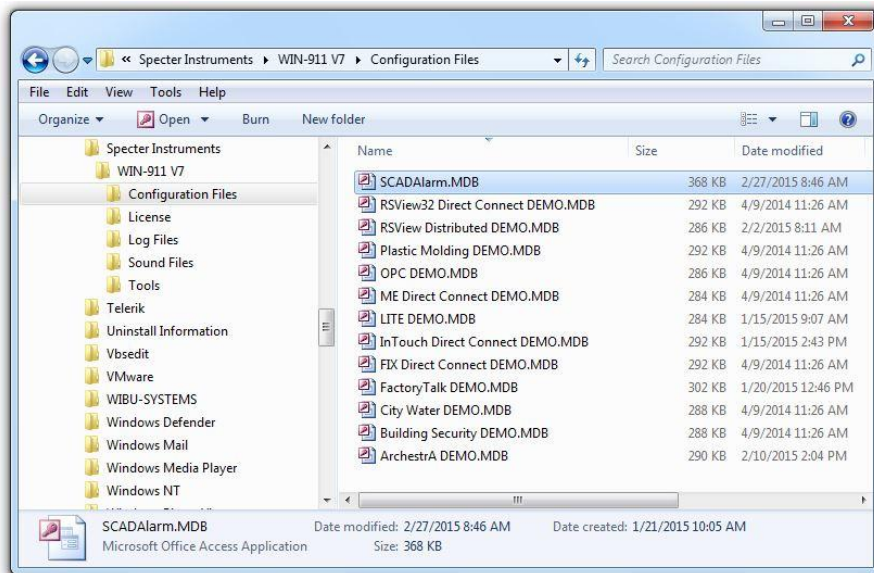
Hunt down the SCADAAlarm configuration text file you produce earlier. By default the file will be named “SCADAAlarm Configuration Listing.txt”. Select the file and click “Open” to load the configuration into the utility.



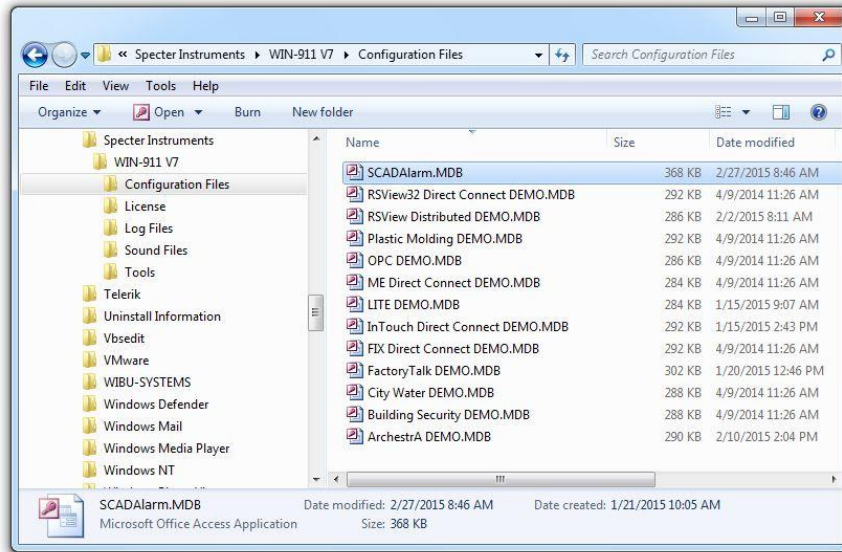
The utility will allow you to view the information it has collected from the file, but it will not let you modify anything.



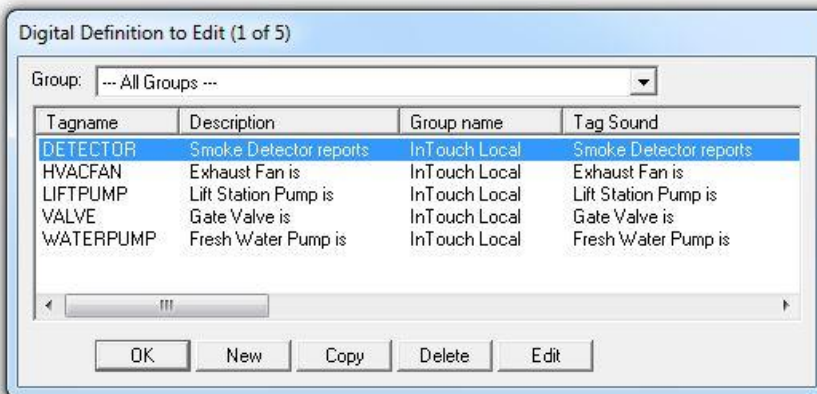
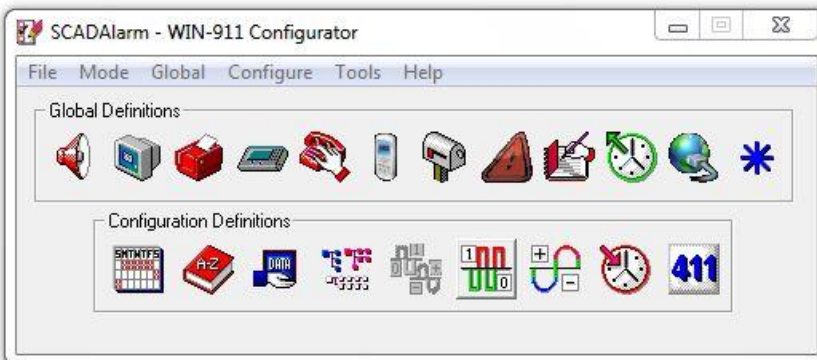
Next click the “Save” button to produce the WIN-911 V7 configuration file. The Save button will disable once clicked. The file will always be named “SCADAAlarm.MDB” and will always be saved to a sub-directory of “.\Configuration Files”.



After you have produced the SCADAAlarm.MDB you need to open it with the “WIN911 Configurator.exe” (the WIN-911 configuration program). Go to the main menu and click on “File” and select “Open” and find and select the new file.



Once you have the file open travel through the dialogs that present the information via the bottom toolbar and review the imported information and edit anywhere you think is needed. Save the file and you are ready to run the configuration in WIN-911. Consider renaming the configuration file given the SCADAAlarm Conversion Tool will overwrite any file with the SCADAAlarm.MDB name if ran again.



If the utility presents a message dialog when you click "Save" that says it can't find anything to import it means you do not have any items in the SCADAAlarm project that are named ending with *.Alarm, *.High, etc.. This version of the utility requires suffix names. Please contact WIN-911 tech support if your SCADAAlarm project was defined without them.